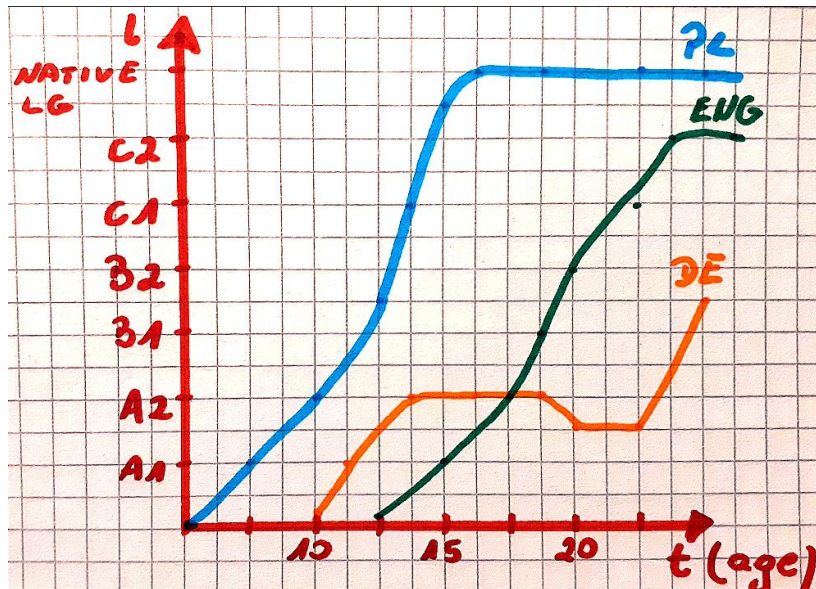


My individual multilingual profile

Weronika Wylot

3BA/3

Figure 1: Overall Multilinguist Development



Notes:

- L = language level
- T = time/learner's age (from 0 to 22 years old)
- Polish = native language
- German = L2 (started learning at the age of 10 but became proficient as an adult)
- English = L3 (started taking classes at around 12 and became proficient fairly quickly; reached C1 and C2 proficiency levels after starting my studies at WA)
- Disclaimer: I do realize that the native language proficiency is not a level of proficiency that can be reached in one's second language; My chart is made as to fit my L1 (Polish) along with my L2s (English and German)

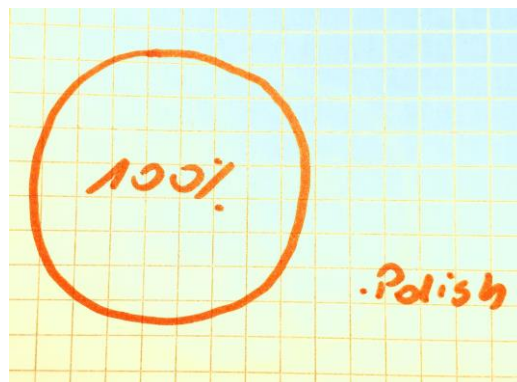
Figure 2: Dominant Language Constellations (DLC)



Notes:

- Polish and English = dominant languages (used every day but in different contexts)
- German = used at least every week
- Latin, French and Japanese = languages that I used to study and have some knowledge of, but which were not used and, in consequence, my knowledge of them has deteriorated

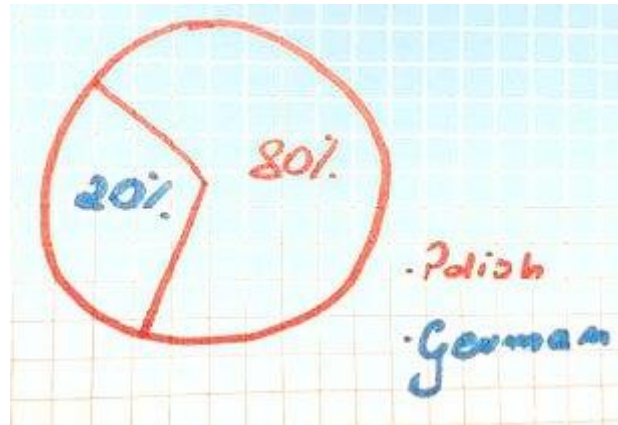
Figure 3.1.: Kindergarten and early years of elementary school



Notes:

- 100% monolingual (ages from 0 to around 10)

Figure 3.2.: Later years of elementary school



Notes:

- Started taking German classes in school a couple of times a week

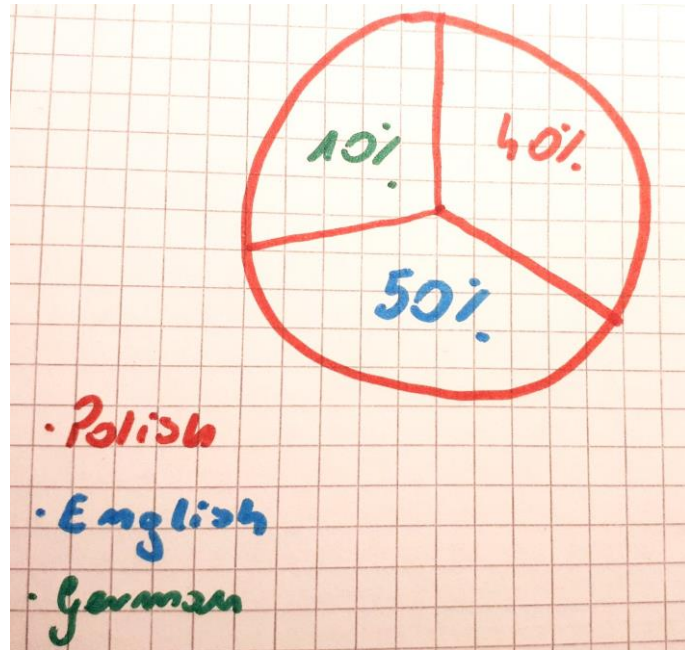
Figure 3.3.: Later years of elementary school, junior high school and high school



Notes:

- Started learning English and later went to a bilingual school (English and Polish used on the daily basis)
- German still present but less relevant

Figure 3.4.: College (1BA-3BA)



Notes:

- English used every day (as the main language of my studies)
- Polish used in everyday life
- German still present (at least once a week)